

ASCO™ Steam and Aggressive Fluid Piston Valves

Air Operated, 304 Stainless Steel Bodies | 1/2" to 2" NPT

2/2
SERIES
298B

Features

- Rugged design, built to withstand steam, superheated water, and corrosive fluids
- Available in normally closed and normally open constructions
- High-performance, maintenance-free stuffing box that is resistant to thermal shock
- Anti-water hammer design
- Pressure can be applied to any port as needed by the process
- Visual position indicator standard
- Ideal for use on tire presses and industrial autoclaves

Construction

Operator: Nickel plated aluminum

Valve Parts in Contact with Fluids	
Valve body and plug	304 Stainless Steel
Stuffing box housing	304 Stainless Steel
Stem, Disc	431L Stainless Steel
Stuffing box packing	PTFE Chevron
Disc seal	PTFE
Valve body seal	PTFE

Specifications

Fluid: Steam, superheated water, corrosive fluids

Fluid Temperature Range: 14°F to 356°F (-10°C to 180°C)

Ambient Temperature Range: -4°F to 356°F (-20°C to 180°C)

Maximum Viscosity: 23,500 SSU

Options

For other pipe connections, alternate pilot valves and construction options, please consult factory

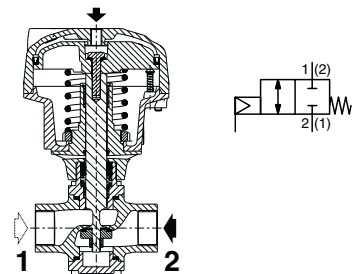
Pilot Valve

8356 Series

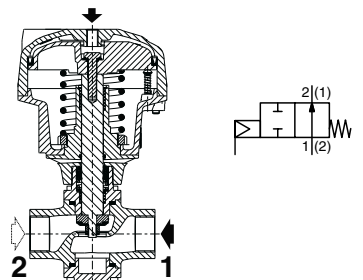
- In-line mount
 - 1/8" or 1/4" NPT
 - Brass or Stainless Steel
- (see 8356 catalog page for specifications)



Normally Closed



Normally Open



Installation

Valve can be mounted in any position

SPECIAL
SERVICE VALVES

Specifications English units (Metric)

Pipe Size (in)	Operator (mm)	Flow Cv (Kv)		Operating Pressure Differential (psi)		Catalog Number	Air Pilot Pressure (psi)		Const. Ref.	Approx. Shipping Weight (lbs.)
		Ports 1 - 2	Ports 2 - 1	Min.	Max. ①		Min.	Max.		
Normally Closed										
1/2" (15)	80	5.1 (4.4)	5.8 (5.0)	0	580 (40)	8298B0370TA0000	②	145 (10)	1	4.0 (1.8)
3/4" (20)	100	8.9 (7.7)	9.8 (8.5)	0	580 (40)	8298B04D0TA0000	②	145 (10)	2	7.5 (3.4)
1" (25)	100	13.5 (11.5)	13.0 (12.0)	0	580 (40)	8298B05D0TA0000	②	145 (10)	3	9.3 (4.2)
1-1/4" (32)	150	20.0 (18.0)	20.0 (18.0)	0	580 (40)	8298B06K0TA0000	②	145 (10)	4	21.0 (9.3)
1-1/2" (40)	150	33.5 (29.0)	33.5 (29.0)	0	580 (40)	8298B07K0TA0000	②	145 (10)	5	27.0 (11.4)
2" (50)	200	66.0 (57.0)	66.0 (57.0)	0	580 (40)	8298B08M0TA0000	②	145 (10)	6	53.0 (23.5)
Normally Open										
1/2" (15)	80	4.0 (3.5)	4.0 (3.5)	0	580 (40)	8298B1370TA0000	③	145 (10)	1	4.0 (1.8)
3/4" (20)	100	8.3 (7.2)	8.1 (7.0)	0	580 (40)	8298B14D0TA0000	③	145 (10)	2	7.7 (3.5)
1" (25)	100	12.0 (11.0)	12.0 (11.0)	0	580 (40)	8298B15D0TA0000	③	145 (10)	3	9.1 (4.1)
1-1/4" (32)	150	20.0 (18.0)	17.0 (15.0)	0	580 (40)	8298B16K0TA0000	③	145 (10)	4	21.0 (9.3)
1-1/2" (40)	150	32.6 (28.2)	32.6 (28.2)	0	580 (40)	8298B17K0TA0000	③	145 (10)	5	27.0 (11.4)
2" (50)	200	61.0 (53.0)	61.0 (53.0)	0	580 (40)	8298B18M0TA0000	③	145 (10)	6	49.0 (21.7)

① 580 psi within the specified fluid temperature limits, see Diagram 1; 40 bar within the specified fluid temperature limits, see Diagram 1A
 ② Minimum pilot pressure for Normally Closed varies with differential pressure. See Chart A (psi); See Chart A1 (bar)
 ③ Minimum pilot pressure for Normally Open varies with differential pressure. See Chart B (psi); See Chart B1 (bar)

Spare Part Kits

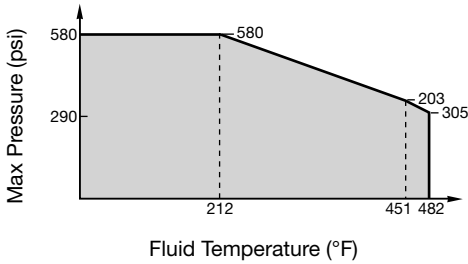
Type	Catalog Number	Spare Parts Kit
Normally Closed	8298B0370TA0000	M29852671700100
	8298B04D0TA0000	M29852671700400
	8298B05D0TA0000	M29852671700700
	8298B06K0TA0000	M29852671701000
	8298B07K0TA0000	M29852671701300
	8298B08M0TA0000	M29852671701600
Normally Open	8298B1370TA0000	M29852671700200
	8298B14D0TA0000	M29852671700500
	8298B15D0TA0000	M29852671700800
	8298B16K0TA0000	M29852671701100
	8298B17K0TA0000	M29852671701400
	8298B18M0TA0000	M29852671701700

SPECIAL SERVICE VALVES



English units

Diagram 1



Metric units

Diagram 1A

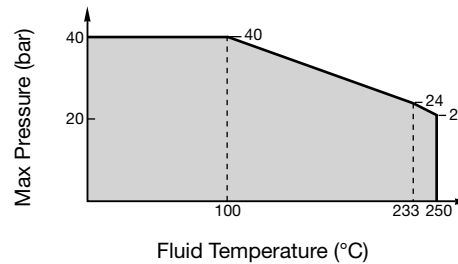


Chart A

Minimum Pilot Pressure
Normally Closed

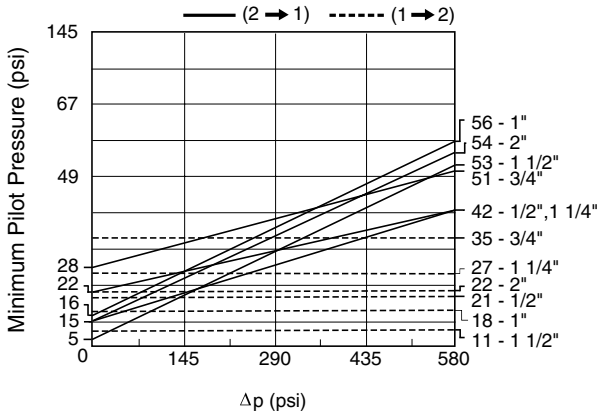


Chart A1

Minimum Pilot Pressure
Normally Closed

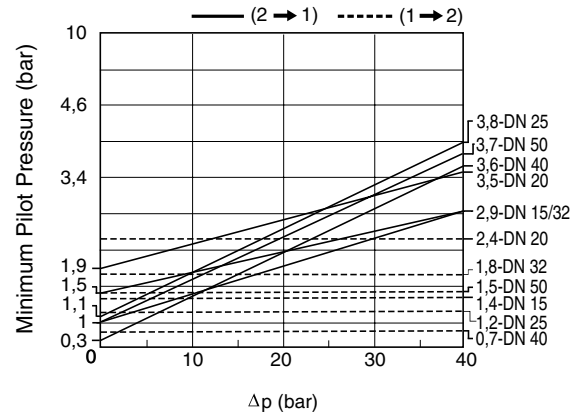


Chart B

Minimum Pilot Pressure
Normally Open

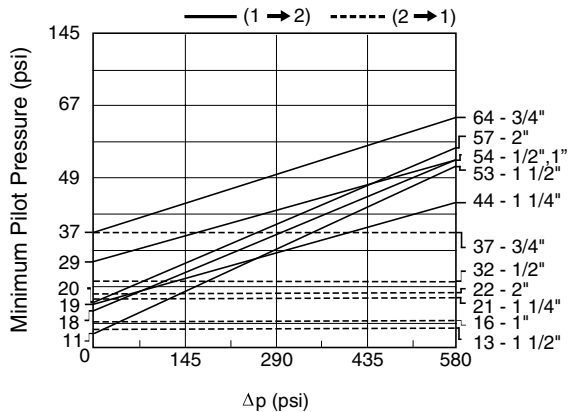
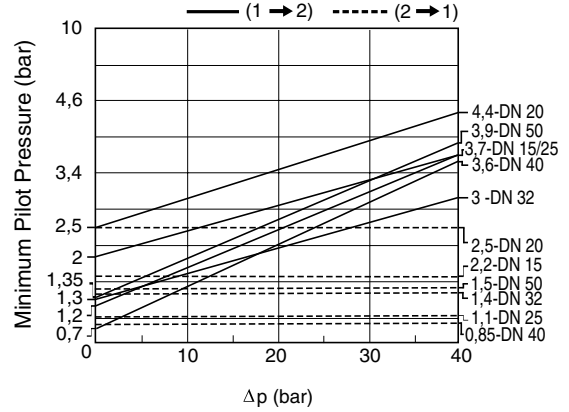


Chart B1

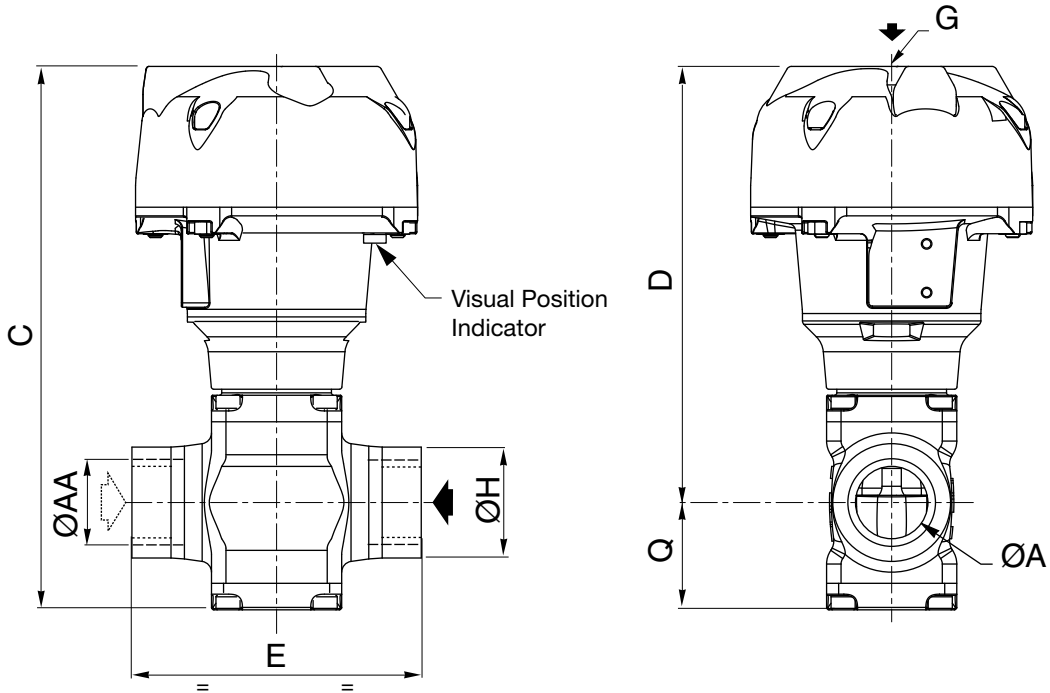
Minimum Pilot Pressure
Normally Open



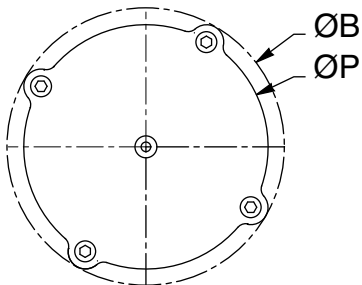
SPECIAL
SERVICE VALVES

Dimensions inches (mm)

Const. Ref		ØAA	ØA	ØB	C	D	E	G	ØH	ØP	Q
1	in	1/2	0.59	4.3	7.2	6.0	3.3	NPT 1/8	1.3	3.7	1.3
	mm	15	15	110	184	152	85		33	95	33
2	in	3/4	0.79	5.2	8.3	6.7	4.3	NPT 1/8	1.6	4.6	1.5
	mm	20	20	133	210	171	110		40	117	39
3	in	1	0.98	5.2	8.9	7.1	4.7	NPT 1/8	1.8	4.6	1.8
	mm	25	25	133	225	181	120		46	117	45
4	in	1 1/4	1.3	7.5	11	9.3	5.7	NPT 1/4	2.2	6.8	2.2
	mm	32	32	191	291	237	145		57	173	54
5	in	1 1/2	1.6	7.5	13	10	5.9	NPT 1/4	2.6	1.8	2.6
	mm	40	40	191	326	259	150		65	173	67
6	in	2	2.0	9.7	16	13	7.5	NPT 1/4	3.0	9.1	3.2
	mm	50	50	247	409	329	190		75	230	81



Top down view



SPECIAL
 SERVICE VALVES